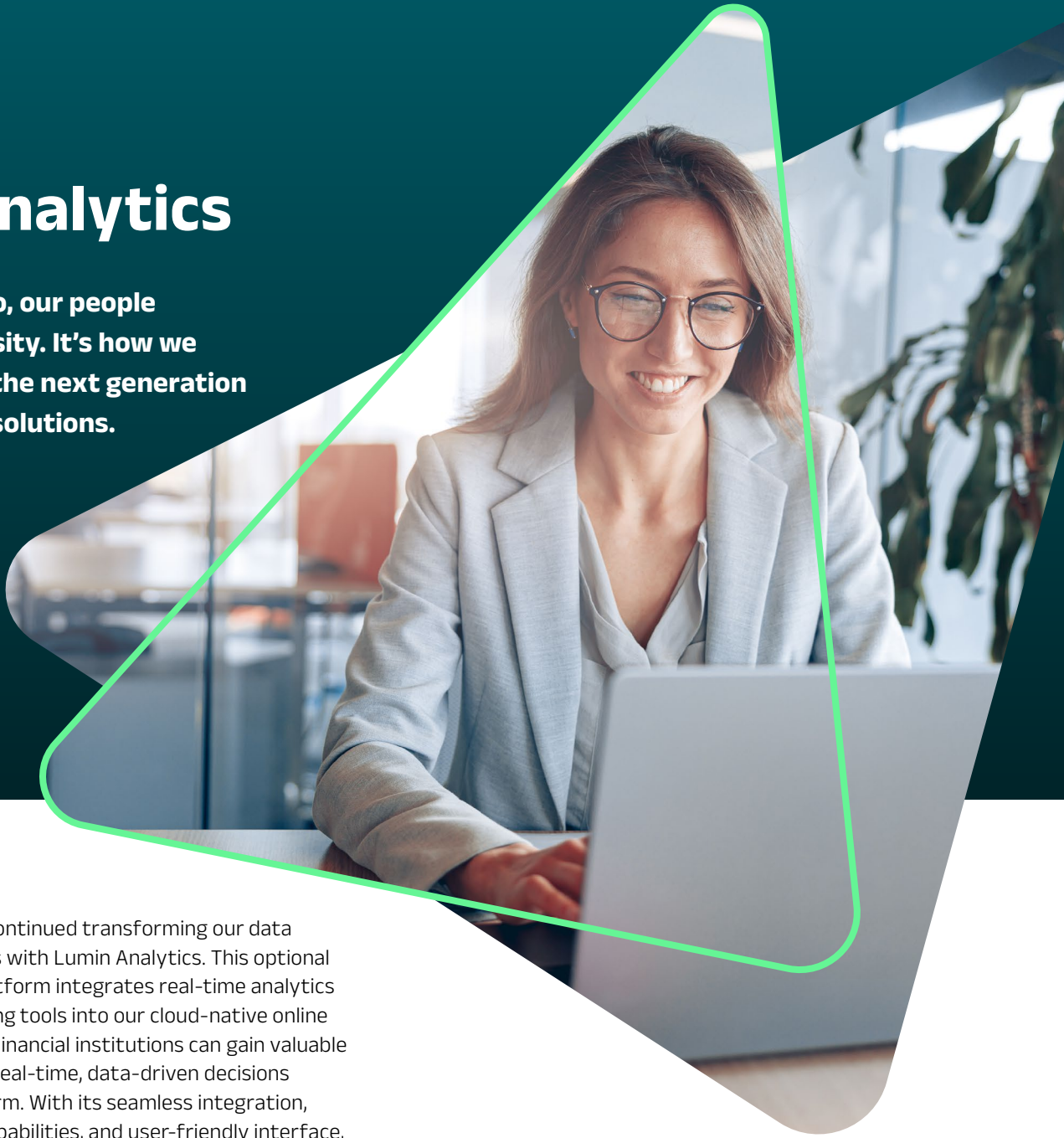


Lumin Analytics

In everything we do, our people are driven by curiosity. It's how we continually invent the next generation of digital financial solutions.



That's why we've continued transforming our data analysis capabilities with Lumin Analytics. This optional streaming data platform integrates real-time analytics and machine learning tools into our cloud-native online banking platform. Financial institutions can gain valuable insights and make real-time, data-driven decisions through the platform. With its seamless integration, robust analytics capabilities, and user-friendly interface, Lumin Analytics is putting the power of data into the hands of financial institutions, helping them reduce costs and drive growth and innovation.

Lumin Analytics include:



- Real-time data streaming of datasets that contain user, account, transfer, marketing campaign activity, wires, secure message, savings goal, engagement, metrics, and audit data.
- Continuously updated dashboards and on-demand reporting capabilities.
- Pre-built dashboards include: Digital Banking Activity Metrics, Alerts and Disputes, Retail ACH Transfers, Enrollment, CMS Campaign Activity, Next Best Actions, CMS FAQ, Secure Messaging, and Risk.
- Integrated access and permissions through Lumin Admin website.
- Powerful, advanced features include built-in forecasting, automated machine learning-derived insights, calculated field creation, custom clickable actions, and sophisticated yet intuitive filtering capabilities.
- Ability to create custom analyses and dashboards, utilizing a variety of visualization options, data fields and custom filtering features.
- Multi-hour product training provided for all team members that will be using Lumin Analytics.

Pre-built dashboards

Lumin Analytics comes with pre-built, out-of-the-box dashboards, allowing you to hit the ground running and deliver key usage metrics and valuable user insights on your first day.

CMS

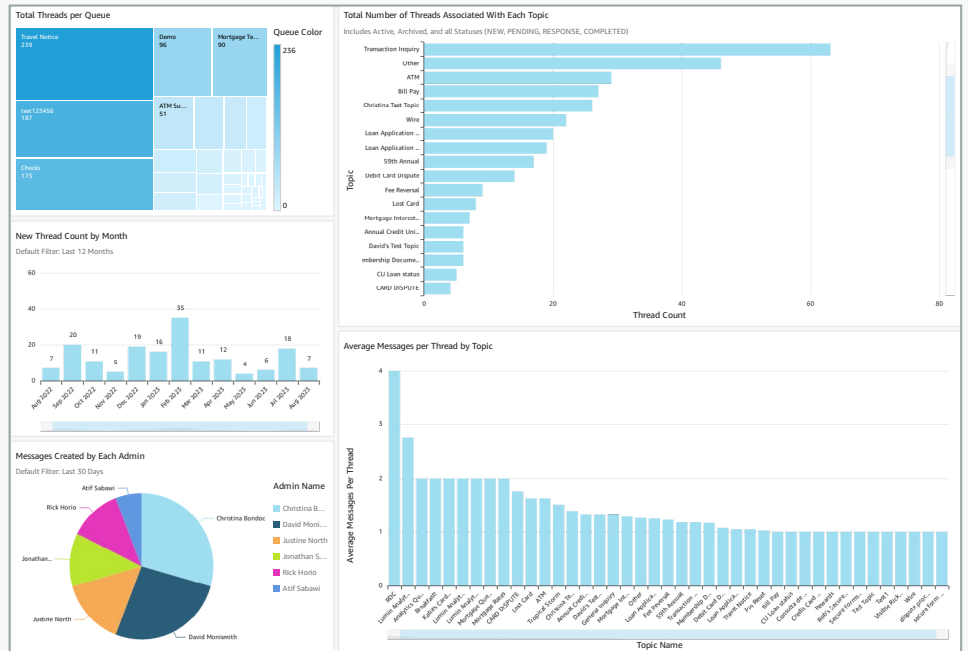
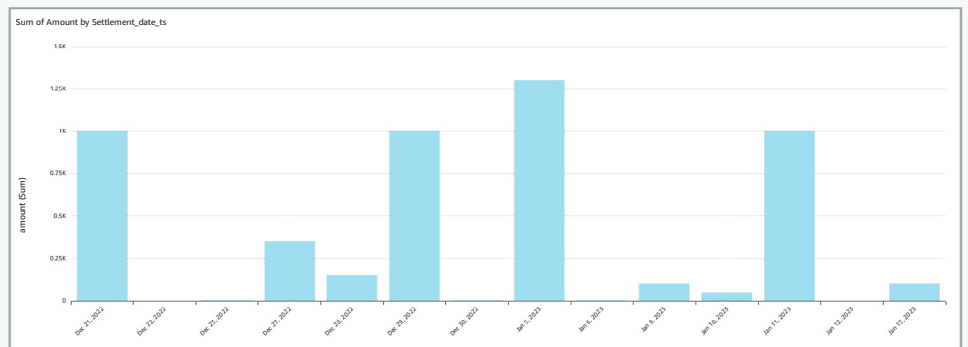
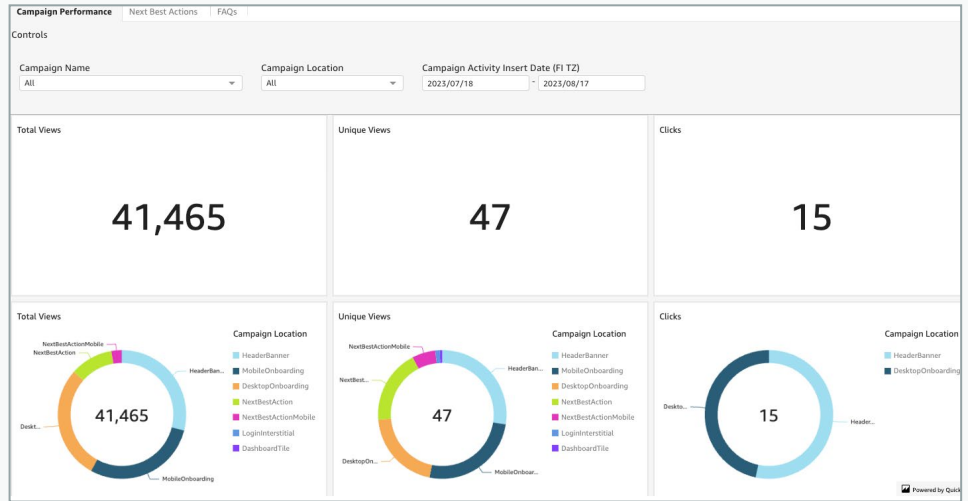
At a glance, up-to-the-minute results for your Marketing campaigns, Next Best Actions (NBAs), and FAQs—including detailed, user-level interactions.

ACH

Stay on top of all incoming, outgoing, and return ACH transactions, including data for ACH transaction risk scores, cumulative ACH usage by user, transfer amount trends over time, and top transfer to/from institutions.

Secure messaging

Manage your team's performance regarding direct customer communications through Lumin's Secure Message feature. This dashboard allows you to monitor message queues, measure time to respond, time to close metrics, and analyze message topics driving the most inquiries into your Help Center.



REQUEST YOUR DEMO TODAY

Your members or customers deserve a top-notch digital experience, and we want to make it as easy as possible for you to implement. To learn more or request a demo, visit lumindigital.com.